

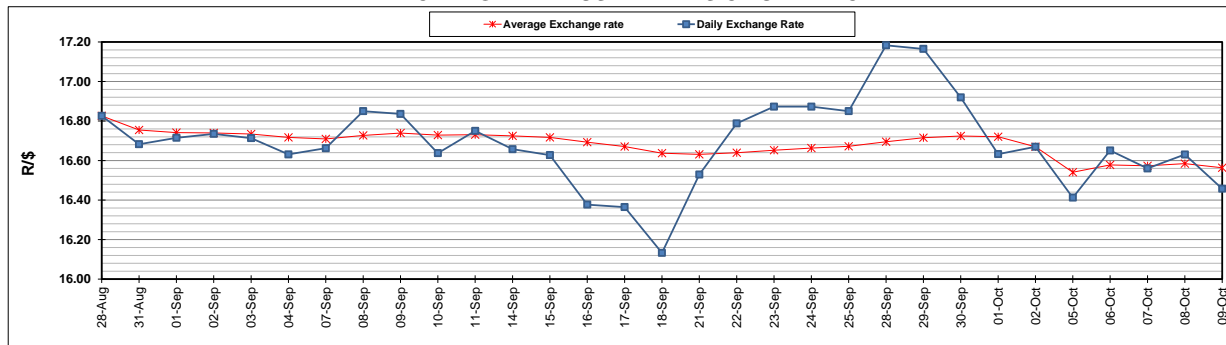
	PETROL 95 ULP	PETROL 93 ULP & LRP	DIESEL 0.05%	DIESEL 0.005%	ILL. PAR.
GAUTENG PUMP PRICE (SA c/l) AS FROM 07/10/2020	1,486.000	1,466.000	-	-	-
WHOLESALE PRICE (SA c/l) AS FROM 07/10/2020	-	-	1,237.560	1,238.960	640.828
SINGLE NATIONAL MAXIMUM RETAIL PRICE	-	-	-	-	798.000
BASIC FUEL PRICE - 09/10/2020 (SA c/l)	532.978	521.697	510.942	513.580	474.855
PRESS RELEASE CONTRIBUTION TO BFP 07/10/2020 - 09/10/2020 (SA c/l)	533.470	523.470	486.630	488.030	436.128
UNIT OVER/(UNDER) RECOVERY - 09/10/2020 (SA c/l)	0.492	1.773	(24.312)	(25.550)	(38.727)
AVERAGE BASIC FUEL PRICE 02/10/2020 - 09/10/2020	530.882	519.931	494.628	496.307	464.210
AVERAGE UNIT OVER/(UNDER) RECOVERY 02/10/2020 - 09/10/2020	18.588	15.039	37.003	38.223	9.918

### ANALYSIS MOVEMENT OF AVERAGE OVER/(UNDER) RECOVERY

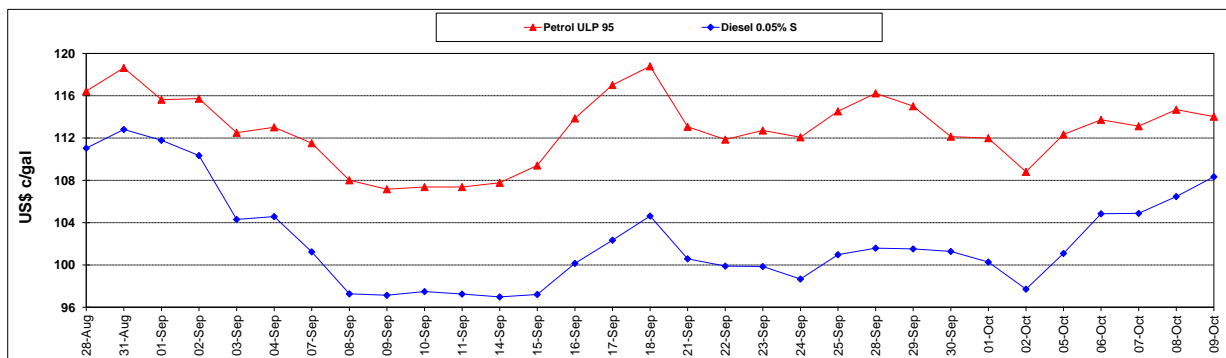
	PETROL 95	PETROL 93	DIESEL 0.05%	DIESEL 0.005%	ILL. PAR.
- MOVEMENT IN INTERNATIONAL PRODUCT PRICES	13.559	10.114	32.317	33.522	5.521
- MOVEMENT IN EXCHANGE RATE	5.029	4.925	4.685	4.701	4.397
AVERAGE UNIT OVER/(UNDER) RECOVERY 02/10/2020 - 09/10/2020	18.588	15.039	37.003	38.223	9.918

### R/\$ EXCHANGE RATE - (R/\$16.4575 - 09/10/2020)

#### EXCHANGE RATE USED IN BASIC FUEL PRICE



#### INTERNATIONAL PRODUCT PRICES OF BASKET USED IN BASIC FUEL PRICE



#### BASIC FUEL PRICE IN SA CENTS PER LITRE

